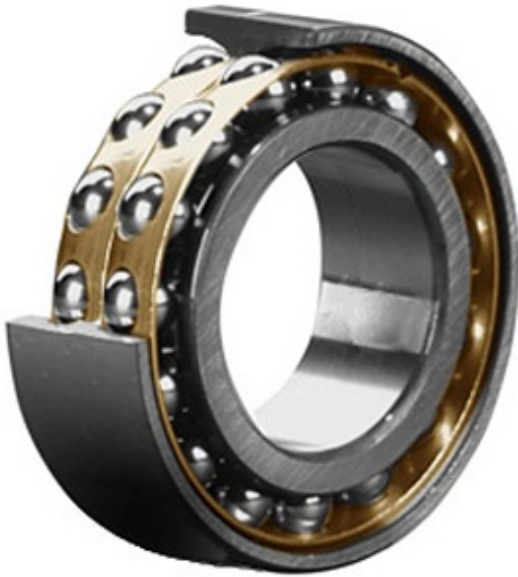




## PRD BEARINGS LLC



5221 M Bearing 2D drawings and 3D CAD models

4.134 Inch | 105 Millimeter x 7.48 Inch | 190  
Millimeter x 2.563 Inch | 65.1 Millimeter  
**CONSOLIDATED BEARING 5221 M Angular  
Contact Ball Bearings**

Bearing No. 5221 M

Category	Angular Contact Ball Bearings
Inventory	0.0
Manufacturer Name	CONSOLIDATED BEARING
Minimum Buy Quantity	N/A
Weight	7.41
EAN	0644075118026
Product Group	B00152
Enclosure	Open
Flush Ground	No
Rolling Element	Ball Bearing
Number of Rows of Balls	Double Row
Precision Class	ABEC 1   ISO P0
Maximum Capacity / Filling Slot	Yes
Snap Ring	No
Cage Material	Bronze
Contact Angle	35 degree
Internal Clearance	C0-Medium
Number of Bearings	1 (Single)
Inch - Metric	Metric
Long Description	105MM Bore; 190MM Outside Diameter; 65.1MM Width; Open; No Flush Ground; Ball Bearing;



## PRD BEARINGS LLC

	Double Row of Balls; ABEC 1   ISO P0; Yes Filling Slot; No Snap Ring
Category	Angular Contact Ball Bearing
UNSPSC	31171531
Harmonized Tariff Code	8482.10.50.28
Noun	Bearing
Keyword String	Angular Contact
Manufacturer URL	<a href="http://www.consbrgs.com">http://www.consbrgs.com</a>
Manufacturer Item Number	5221 M
Weight / LBS	16.314
D	7.48 Inch   190 Millimeter
B	2.563 Inch   65.1 Millimeter
d	4.134 Inch   105 Millimeter