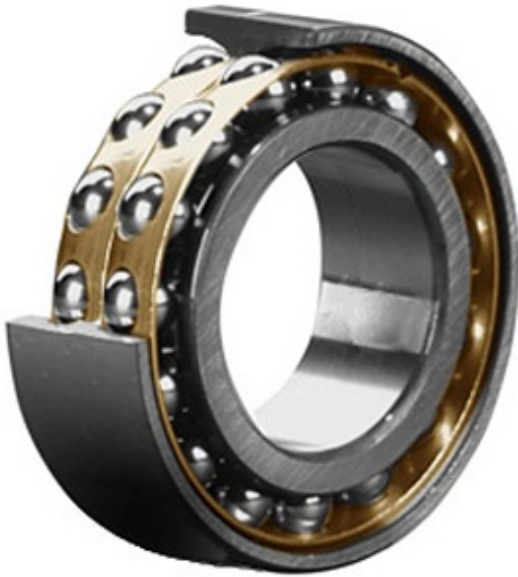




PRD BEARINGS LLC



5222 M C/3 Bearing 2D drawings and 3D CAD models

4.331 Inch | 110 Millimeter x 7.874 Inch | 200
Millimeter x 2.748 Inch | 69.8 Millimeter
CONSOLIDATED BEARING 5222 M C/3
Angular Contact Ball Bearings

Bearing No. 5222 M C/3

Category	Angular Contact Ball Bearings
Inventory	0.0
Manufacturer Name	CONSOLIDATED BEARING
Minimum Buy Quantity	N/A
Weight	8.68
EAN	0644075118071
Product Group	B00152
Enclosure	Open
Flush Ground	No
Rolling Element	Ball Bearing
Number of Rows of Balls	Double Row
Precision Class	ABEC 1 ISO P0
Maximum Capacity / Filling Slot	Yes
Snap Ring	No
Cage Material	Bronze
Contact Angle	35 degree
Internal Clearance	C3-Loose
Number of Bearings	1 (Single)
Inch - Metric	Metric
Long Description	110MM Bore; 200MM Outside Diameter; 69.8MM Width; Open; No Flush Ground; Ball Bearing;



PRD BEARINGS LLC

	Double Row of Balls; ABEC 1 ISO P0; Yes Filling Slot; No Snap Ring
Category	Angular Contact Ball Bearing
UNSPSC	31171531
Harmonized Tariff Code	8482.10.50.28
Noun	Bearing
Keyword String	Angular Contact
Manufacturer URL	http://www.consbrgs.com
Manufacturer Item Number	5222 M C/3
Weight / LBS	19.114
D	7.874 Inch 200 Millimeter
d	4.331 Inch 110 Millimeter
B	2.748 Inch 69.8 Millimeter