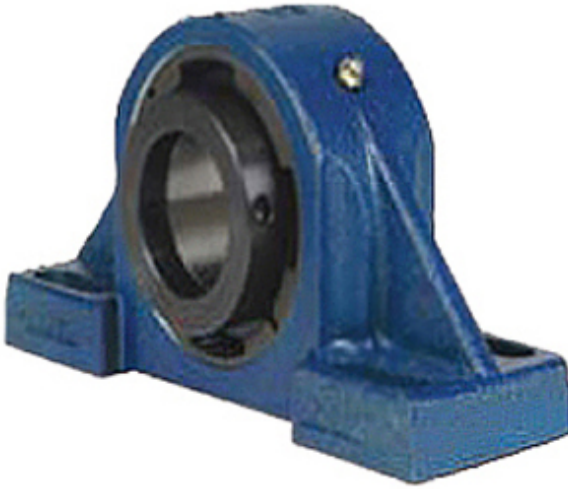




PRD BEARINGS LLC



QVPG15V065SEN Bearing 2D drawings and 3D CAD models

2.559 Inch | 65 Millimeter x 3.25 Inch | 82.55 Millimeter x 3.15 Inch | 80 Millimeter QM INDUSTRIES QVPG15V065SEN Pillow Block Bearings

Bearing No. QVPG15V065SEN

Category	Pillow Block Bearings
Inventory	0.0
Manufacturer Name	TIMKEN
Minimum Buy Quantity	N/A
Weight	10.896
EAN	0883450206501
Product Group	M06288
Number of Mounting Holes	4
Mounting Method	V Lock
Housing Style	4 Bolt Pillow Block
Rolling Element	Spherical Roller Bearing
Housing Material	Cast Steel
Expansion / Non-expansion	Expansion
Mounting Bolts	5/8 Inch
Relubricatable	Yes
Insert Part Number	22215
Seals	Triple Lip Viton
Housing Configuration	1 Piece Solid
Inch - Metric	Metric
Other Features	Double Row Single Nut SN Style
Long Description	4 Bolt Pillow Block; 65MM Bore; 80MM Base to Center Height; V Lock Mount; Spherical Roller Bearing;



PRD BEARINGS LLC

	201.676MM Minimum Bolt Spacing; 246.126MM Bolt Spacing Maximum; Relubricatable; Cast Steel; Triple L
Category	Pillow Block
UNSPSC	31171511
Harmonized Tariff Code	8483.20.40.80
Noun	Bearing
Keyword String	Pillow Block
Manufacturer URL	http://www.qmbearings.com
Manufacturer Item Number	QVPG15V065SEN
Weight / LBS	24
Actual Bolt Center to Center	0 Inch 0Millimeter
B	3.15 Inch 80 Millimeter
d	2.559 Inch 65 Millimeter
Nominal Bolt Center to Center	8.8 Inch 223 Millimeter
Bolt Spacing Minimum	7.94 Inch 201.676Millimeter
D	3.25 Inch 82.55 Millimeter
Bolt Spacing Maximum	9.69 Inch 246.126Millimeter