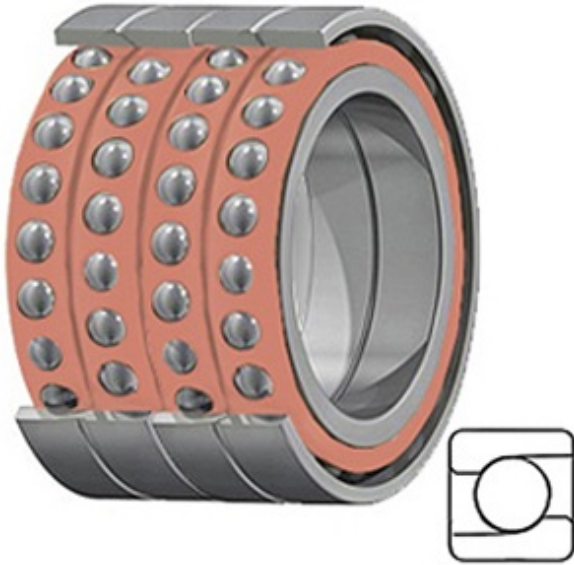




PRD BEARINGS LLC



0.669 Inch | 17 Millimeter x 1.575 Inch | 40
 Millimeter x 1.89 Inch | 48 Millimeter TIMKEN
 MM17BS40 QUH Precision Ball Bearings

Bearing No. MM17BS40 QUH

MM17BS40 QUH Bearing 2D drawings and 3D CAD models

Category	Precision Ball Bearings
Inventory	0.0
Manufacturer Name	TIMKEN
Minimum Buy Quantity	N/A
Weight	0.322
EAN	0087796244764
Product Group	B04270
Enclosure	Open
Precision Class	ABEC 7 ISO P4
Material - Ball	Steel
Number of Bearings	4 (1 Quadruplex Set)
Contact Angle	60 Degree
Preload	Heavy
Raceway Style	1 Rib Inner Ring and Outer Ring
Cage Material	Phenolic
Rolling Element	Ball Bearing
Mounting Arrangement	Quadruplex-Universal
Flush Ground	Yes
Inch - Metric	Metric
Other Features	Single Row Angular Contact Ball Screw Support Super Precision With Tighter Lateral Eccentricity
Long Description	17MM Bore; 40MM



PRD BEARINGS LLC

	Outside Diameter; 48MM Width; Open Enclosure; ABEC 7 ISO P4 Precision; Steel Ball Material; 4 (1 Quadruplex Set) Bearings; 60 Degree Contact Angle; Phenolic Cage Material; 1 Rib Inne
Category	Precision Ball Bearings
UNSPSC	31171531
Harmonized Tariff Code	8482.10.50.28
Noun	Bearing
Keyword String	Angular Contact Ball
Manufacturer URL	http://www.timken.com
Manufacturer Item Number	MM17BS40 QUH
Weight / LBS	0.71
d	0.669 Inch 17 Millimeter
D	1.575 Inch 40 Millimeter
B	1.89 Inch 48 Millimeter